

MS TECH
SCIENTIFIC

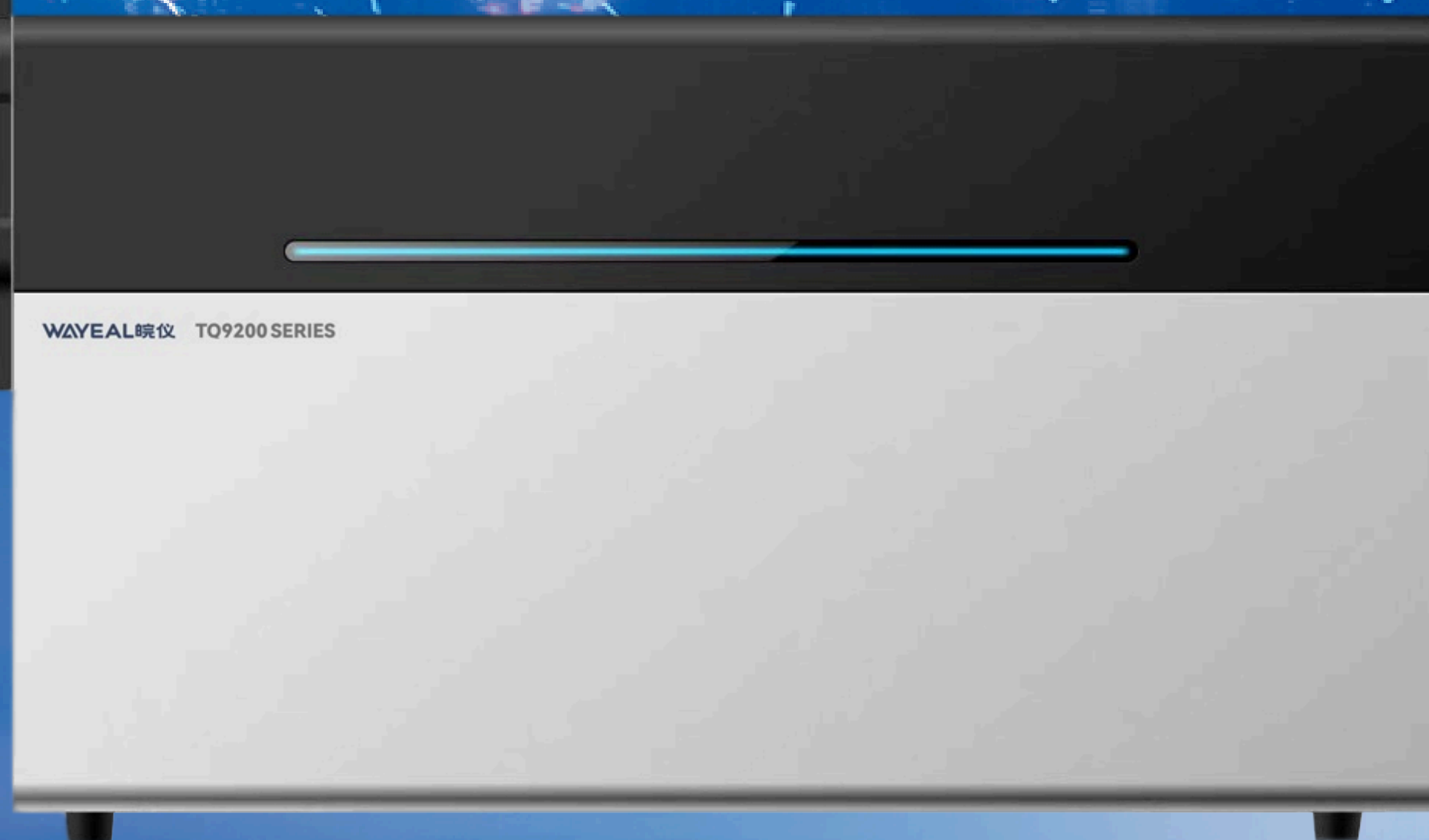
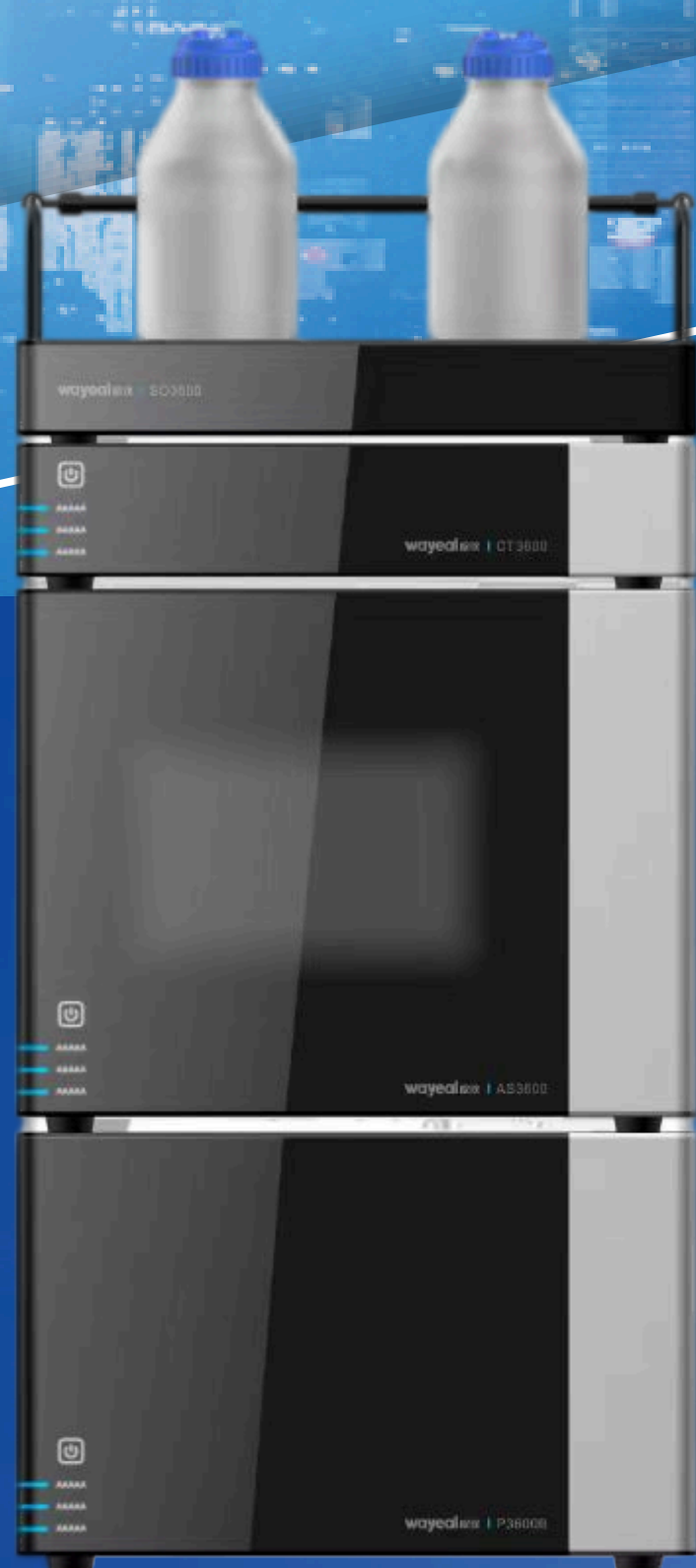


Selling to
Solutioning

MS TECH SCIENTIFIC

SELLING TO SOLUTIONING

WAYEAL 皖仪



LIQUID CHROMATOGRAPHY- MASS SPECTROMETRY



TO KNOW MORE ABOUT
www.mstechscientific.com



+91-8825969419, 7010965800



sales@mstechscientific.com

mstechscientific@gmail.com

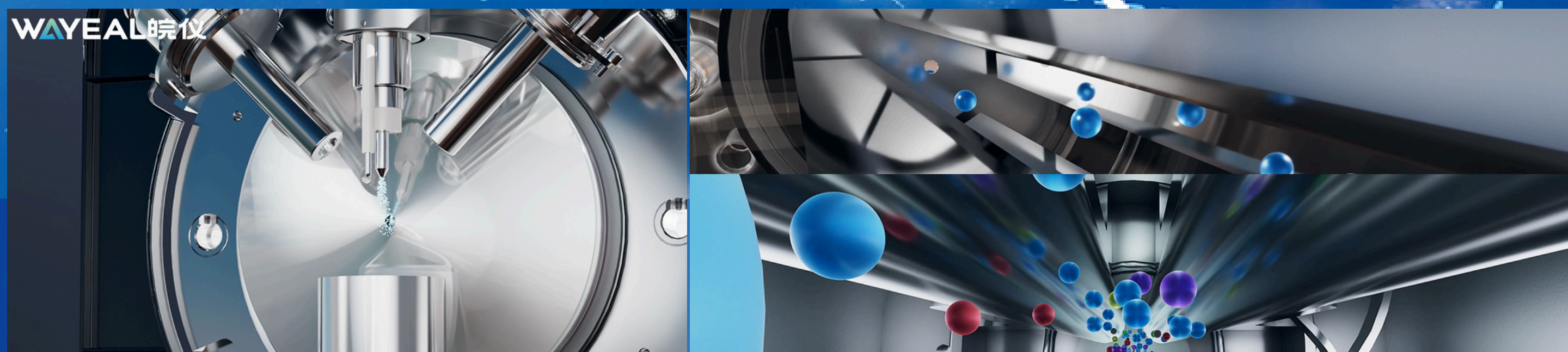


**Primex Infra Structure Lavender Street
Kolapakkam Chennai - 600 116**

LCMS-TQ9200

LIQUID CHROMATOGRAPHY-MASS SPECTROMETRY

SIMPLE - EFFICIENT - SECURE

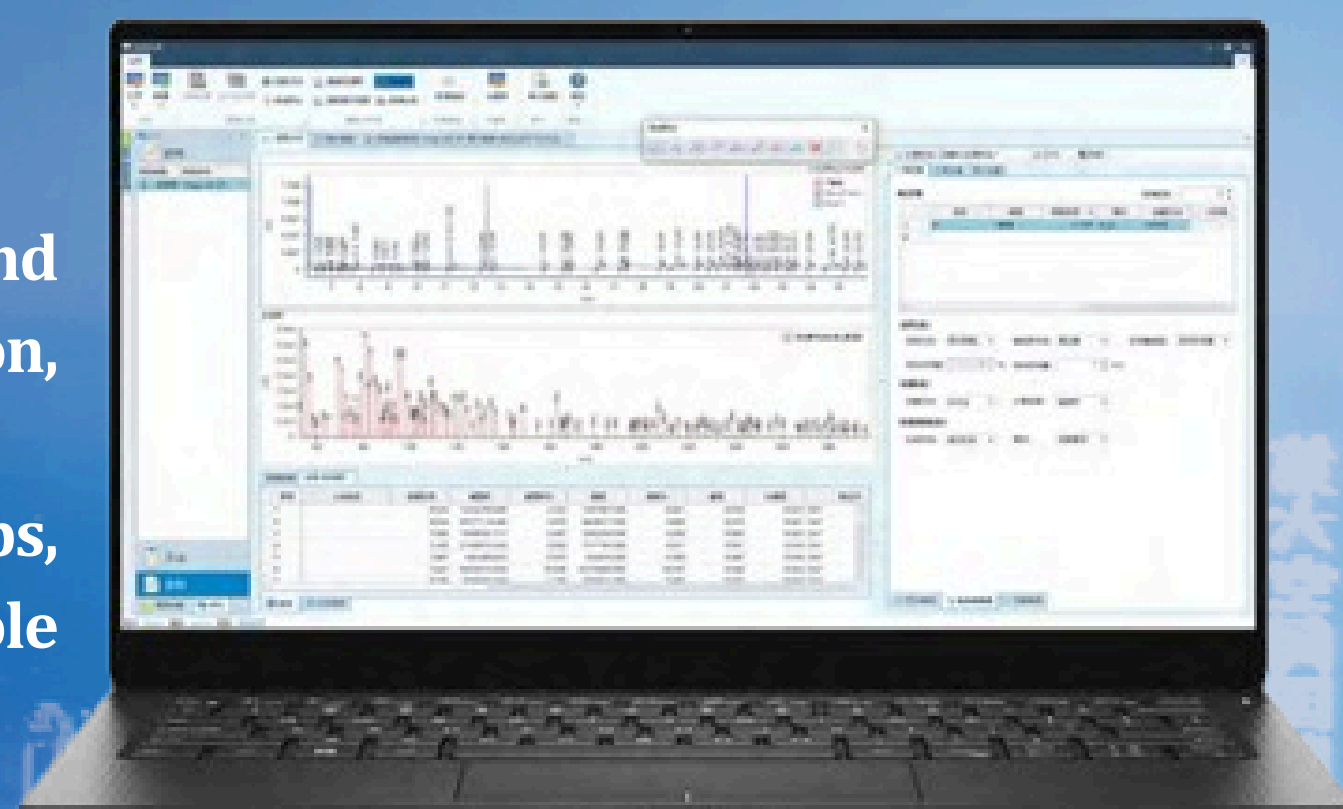


ELECTRO SPRAY IONIZATION

GOLD COATED QUADRUPOLES

SMART LABCDS WORKSTATION

- Combines Liquid Chromatography for separation and Mass Spectrometry for detection and quantification, delivering high sensitivity and precision.
- Key features include ultra-high pressure pumps, advanced ion sources, and tandem quadrupole analyzers for robust performance.



GLP / FDA - 21CFR Part 11

- Higher stability
- Enhanced Sensitivity
- increased durability

UHPLC 3400

ULTRA HIGH PERFORMANCE LIQUID CHROMATOGRAPHY

Innovative Ultra High Performance Liquid Chromatography
Ultra-high pressure linear motor pump. Needle-in-loop sampler for loss less injection and minimal cross-contamination Liquid-core waveguide flow cell technology for lossless optical energy transmission and ultra-high detection rate Fast detection speed, high sensitivity and high separation. Flexible configuration of DAD, FLD, ELSD, RID and other detectors to meet the needs of different customers PCT international patent

WORKSTATION: SMART LAB CDS

- 21CFR Part 11 compliance
- Simple and effective data management
- User Friendly
- Effectively guaranteeing the safety of user data.
- High reliability for user experiments.



HPLC 3200

HIGH PERFORMANCE LIQUID CHROMATOGRAPHY

Main stream split design, complete system testing function, to meet most testing needs. Customized acetonitrile-resistant check valve. The new cam curve design adopts electronic pulsation suppression technology and solvent compression to further reduce pressure fluctuation and ensure higher repeatability of test results. Standard configuration of plunger rod online cleaning function. 1800 L/mm grating imported from France. Fully Intelligent counter-control chromatography workstation

APPLICATIONS



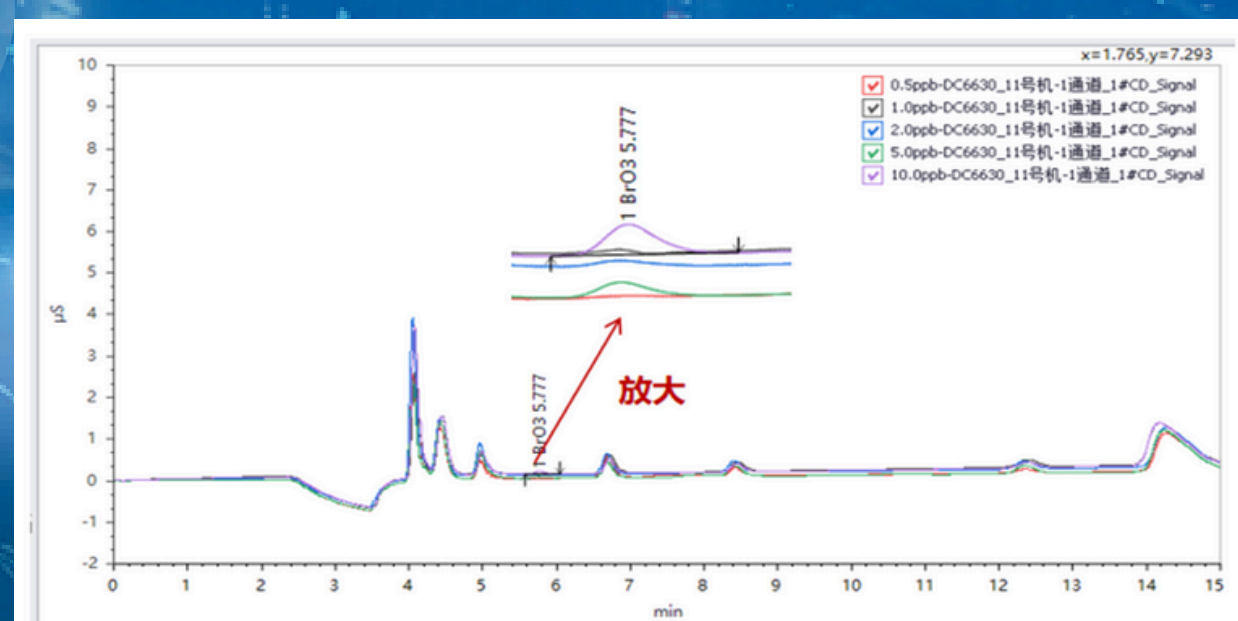
- **FOOD**
- **PHARMA**
- **CHEMICAL**
- **ENVIRONMENT**
- **CLINICAL**



IC6600

MULTIMODE ION CHROMATOGRAPHY

IC6600 series Multimode Ion Chromatography detectors, and ultraviolet detectors, it can realize the detection of conventional anions, cations, cyanide, iodine ions, sugars, small molecule organic acids, hexavalent chromium (chromic acid mist), and transition metals. The conductivity detectors allows for free switching. One machine with multiple functions, while meeting the customer's routine detection, it can upgrade the functions of post-column derivation, online enrichment, online matrix elimination, etc. flexible system to address potential challenges and advanced application scenarios, increasing productivity, expanding capacity, and improving chromatographic performance.

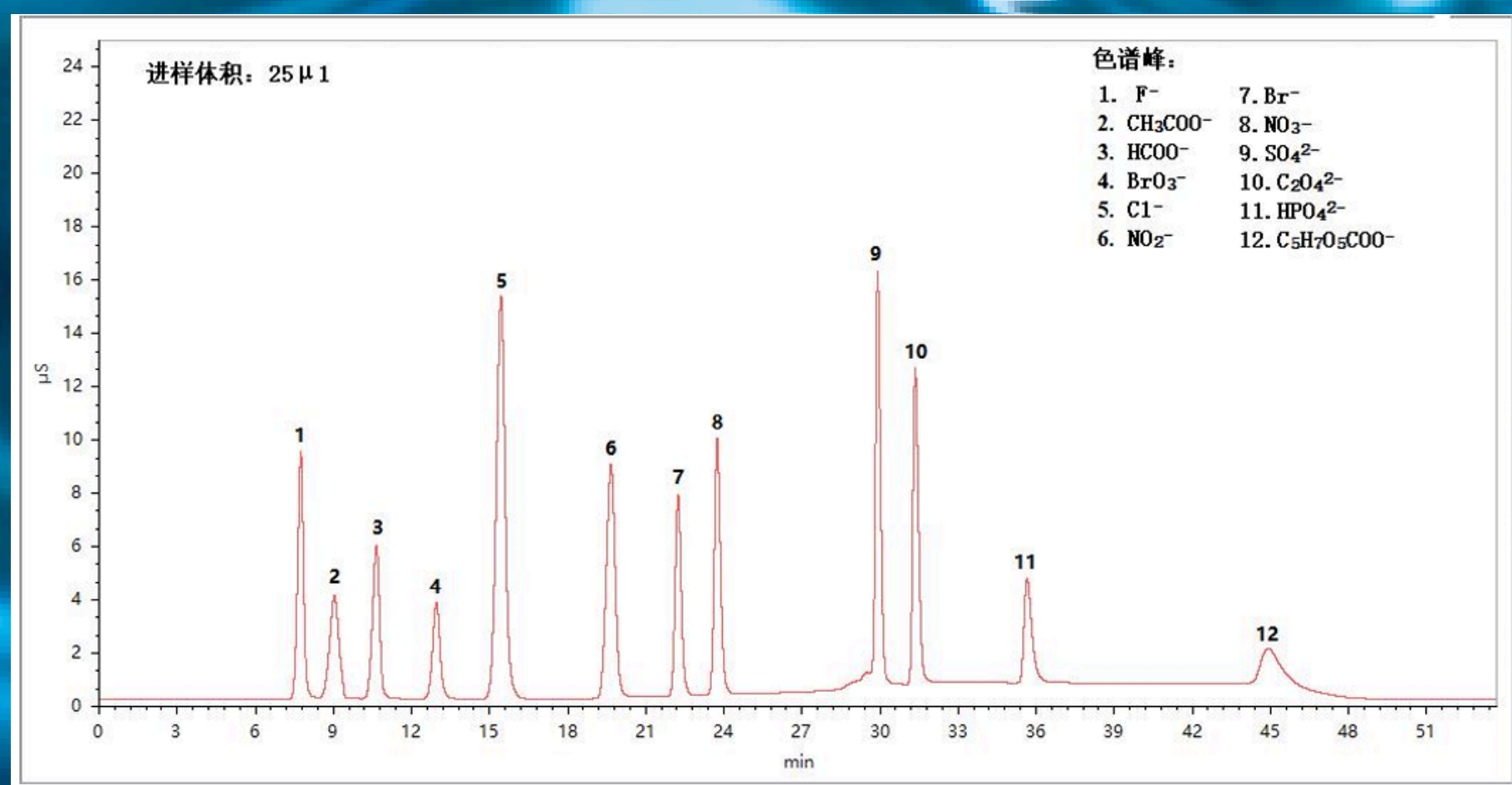


BROMATE 0.5 PPB - 10 PPB

IC6300

INTELLIGENT ION CHROMATOGRAPHY

The IC6300 series intelligent ion chromatography instrument is an integrated intelligent ion chromatography system, which fully opens a new era of ion chromatography. The system is rich in configuration, powerful, simple in layout and easy to operate. The new intelligent control system, equipped with an online eluent generator, and a built-in quaternary gradient pump made of all PEEK materials, is an ideal experimental partner for you to easily achieve your experimental goals.



IC6200

ION CHROMATOGRAPHY

The ion chromatography adopts the world's advanced technology, with reliable performance, accurate results, easy to learn and use, and intelligent. It is suitable for the routine analysis of trace and trace anions, cations, matrix complex samples and the research and development of related methods.

The IC6200 series ion chromatography, integrated design, flexible configuration, compact and convenient, the system performs high-efficiency chromatographic analysis through comprehensive application solutions and intelligent health maintenance functions, and flexible detector configurations can meet your current and future analysis needs.



AUTOSAMPLER



AAS2300

ATOMIC ABSORPTION SPECTROPHOTOMETER

AA2300 series products are the fifth generation of atomic absorption spectrometer. The product is a fully automatic and intelligent spectrometer, with the continuous improvement of technology, the product automation performance and stability of the measurement to a new level, its excellent flexible configuration and rich scalability, and equipped with a powerful software system, safer and more reliable, to meet the detection needs of all walks of life.

8-LAMP HOLDER DESIGN

OPTICAL DUAL BEAM SYSTEM

PARALLEL DUAL ATOMIZATION SYSTEM DESIGN

PNEUMATIC GRAPHITE FURNACE



**GRAPHITE FURNACE
AUTO SAMPLER**

GC6100

GAS CHROMATOGRAPHY (GC)

- **Versatility:** Ideal for separating and analyzing volatile compounds in complex mixtures.
- **Applications:** Widely used in environmental monitoring, food safety, pharmaceuticals, and petrochemical industries.
- **Efficiency:** Provides quick and precise results with high sensitivity.
- **Customization:** Compatible with various detectors like Flame Ionization Detector (FID) and Electron Capture Detector (ECD).



• HIGH-PERFORMANCE CORE TECHNIQUES

• EFFICIENT SAMPLE THROUGHPUT

GCMS6100

GAS CHROMATOGRAPHY-MASS SPECTROMETRY (GCMS)

- **Enhanced Analysis:** Combines GC's separation capabilities with MS's identification and quantification features.
- **High Sensitivity:** Detects trace-level compounds with exceptional accuracy.
- **Broad Applications:** Used in forensic science, toxicology, environmental analysis, and drug testing.
- **Advanced Features:** Supports complex analyses like pesticide residue detection and metabolomics studies.

• FLEXIBILITY AND SCALABILITY



CHROMATOGRAPHY COLUMNS



<i>Product Information</i>	<i>Specification</i>	<i>Particle Size</i>
<i>Hydroxide Anion Column</i>	<i>4.0 x 250 mm/ 150 mm</i>	<i>5 micron</i>
<i>Hydroxide Anion Column</i>	<i>4.6 x 250 mm</i>	<i>5 micron</i>
<i>Carbonate Anion Column</i>	<i>4.0 x 250 mm/ 150 mm</i>	<i>5 micron</i>
<i>MSA Cation Column</i>	<i>4.6 x 250 mm</i>	<i>5 micron</i>

<i>Product Information</i>	<i>Specification</i>	<i>Particle Size</i>	<i>pH Range</i>
<i>Nova Atom C18</i>	<i>4.6 x 250 mm/ 150 mm</i>	<i>5 micron</i>	<i>1.5-9.5</i>
<i>Nova Atom PC18</i>	<i>4.6 x 250 mm/ 150 mm/ 125 mm, 2.1 x 50 mm; 4.0 x 250 mm/ 125mm</i>	<i>5 micron</i>	<i>1.5-9.0</i>
<i>Nova Atom SC18</i>	<i>4.6 x 250 mm/ 150 mm</i>	<i>5 micron</i>	<i>1.5-11.0</i>
<i>Nova Atom C8</i>	<i>4.6x 250 mm/ 150 mm</i>	<i>5 micron</i>	<i>2.0-8.0</i>
<i>Nova Atom Ph</i>	<i>4.6 x 250 mm</i>	<i>5 micron</i>	<i>2.0-8.0</i>
<i>Nova Atom NH2</i>	<i>4.6 x 250 mm/ 150 mm, 2.1 x 150 mm</i>	<i>5 micron</i>	<i>2.0-8.0</i>
<i>Nova Atom CN</i>	<i>4.6 x 250 mm</i>	<i>5 micron</i>	<i>2.0-8.0</i>
<i>Nova Atom Diol</i>	<i>4.6 x 250 mm</i>	<i>5 micron</i>	<i>2.0-8.0</i>
<i>Nova Element tC18</i>	<i>4.6 x 250 mm/ 150 mm (USP:L1)</i>	<i>5 micron</i>	<i>1.0-12.0</i>
<i>Nova Element AQC18</i>	<i>4.6 x 250 mm/ 150 mm(USP:L1)</i>	<i>5 micron</i>	<i>1.0-12.0</i>
<i>Nova Element tC8</i>	<i>4.6 x 250 mm (USP: L7)</i>	<i>5 micron</i>	<i>1.0-12.0</i>
<i>Nova Element tPh</i>	<i>4.6 x 250 mm (USP:L11)</i>	<i>5 micron</i>	<i>1.0-12.0</i>
<i>Nova Element NH2</i>	<i>4.6 x 250 mm(L8)</i>	<i>5 micron</i>	<i>2.0-11.0</i>
<i>Nova Element Amide</i>	<i>4.6 x 150 mm(L68)</i>	<i>5 micron</i>	<i>2.0-11.0</i>



GAS CHROMATOGRAPHY-MASS SPECTROMETRY



MULTIMODE ION CHROMATOGRAPHY

+91-8825969419, 7010965800

sales@mstechscientific.com



TO KNOW MORE ABOUT
www.mstechscientific.com